



HEAVIER DUTY

To lighten your load.

Isuzu has been the leading truck brand in Australia for 30 years straight*. A dominant position earned by offering you safety, performance, driveability, comfort, operating costs, productivity and, above all, our legendary reliability. The FX Series covers 4x2s, 6x4s, a 6x2 and a prime mover. Also offered are choices of transmissions, wheelbases, axles and suspensions. So even when it's heavy duty, we'll lighten your load.

*According to T-Mark industry statistics.

DON'T MISS A THING.

An FX Series option* that offers you the miracle of (almost) 360° vision. Operating through a unique multi-view digital touchscreen audio-visual unit, a camera system puts you all over the truck. You can have cameras in four different positions, all displaying at the same time, and even with audio. It shares the load of manoeuvring in tight spots.

*At additional cost.



THE INS AND OUTS OF YOUR DAY.

Deep non-slip steps and wide doors opening to 90° ensure getting in and out of an Isuzu cab is never a pain, no matter how many times a day you have to do it.

CONTROL YOUR SPEED, AND YOUR CLIMATE.

Advanced electronic cruise-control and automatic climate-control air-conditioning are both standard in all Premium models.



CARRY LOADS IN THE CAB.

Cabs are anything but afterthoughts with Isuzu. For instance, you'll find stacks of storage space and locations for all your stuff. Along with heaps of room for you and your workmates as well, including generous stretch-out legroom. All in all, it's a very comfy and accommodating place to be.



MULTI-MEDIA AT YOUR FINGERTIPS.

Our Isuzu Multimedia System with 6.2 inch screen puts the ultimate cab infotainment system at your fingertips. Navigate through the simple menu to play your favourite songs or (digital) station, or, for even greater convenience and safety, use voice-controls for many of the functions available. Hands-free Bluetooth and sat-nav are standard, and tyre-pressure monitoring is optional*.

*At additional cost.

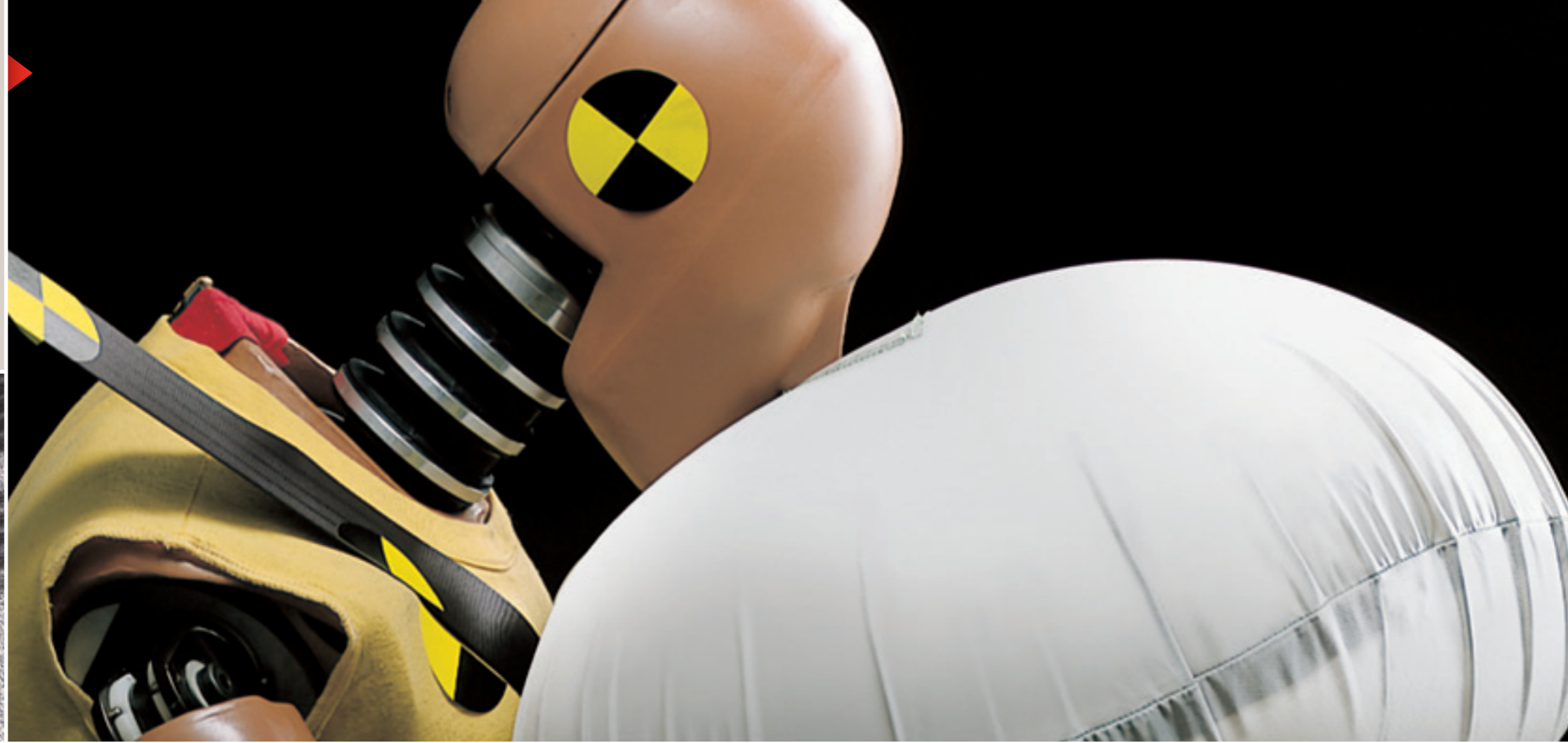
SHARING YOUR SHIFT.

The FXY and FXZ 'long auto' variants come with the trusty, Allison 4430 6-speed auto. It's popular with drivers all over the world. And by eliminating shifting it's reducing fatigue.



A VERY SAFE HAVEN.

All FX Series cabs comply with the latest ECE-R29 standard, so they are truly world-class. Double side-intrusion bars, seatbelt pretensioners and load-limiters, and driver airbags are all standard. Along with traction control and a whole alphabet of other safety systems. In an Isuzu, you will always work safe.



THE BEST SEAT IN THE BUSINESS.

All FX Series have the ISRI 6860 air-suspension driver's seat as standard. And it's anything but standard. It incorporates a lap-sash seatbelt, head restraint, dual-stage air lumbar/lateral support, integrated pneumatic system, adjustable shock-absorber and body-hugging upholstery from head to knee. Sharing the load for the sake of your body.



CONVENIENCE THAT CLICKS.

As you'll see, we've made our cabs easy and safe to get in and out of. Remote, keyless entry and locking make it convenient as well. And if you're in and out of your truck all day long, it's a feature you'll really appreciate.

*Remote shown is for illustrative purposes only.



STEER AROUND HAZARDS.

All FX models come standard with ABS brakes, so you can steer as you brake, along with many other safety features.



GOOD AMERICAN GEAR.

The FX Series features a clever selection of the best componentry from around the world. Like the highly trusted Eaton Fuller 10-speed manual or the German ZF 9-speed manual.

TWENTY-TWENTY HINDSIGHT.

Your twin rear-view mirrors are big, heated and powered, with integrated spotters. It's a case of 'Objects in mirror are clearer than you think'.

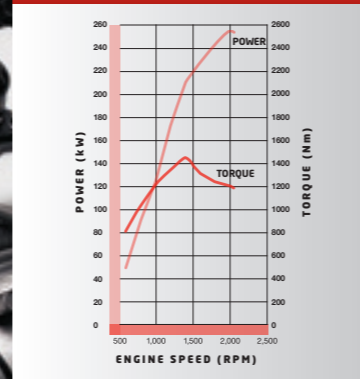


WHICH FX IS YOURS?

Here you'll find basic specifications for our six FX models. If it leaves you undecided about which FX is for you, there's always our ISIS software programme (see over) to make your choice both easier and surer. Pointing you to the model that'll best share the load with you.



SiTEC Series III 350



The Isuzu SiTEC Series III 350 produces 257kW power and 1,422Nm torque and is standard on all FX models.

SPECIFICATIONS

MODEL	DESIGNATION	GVM (kg)	GCM (kg)	ENGINE	POWER (kW@RPM)	TORQUE (Nm@RPM)	TRANSMISSION (GEARS/TYPE)	REAR AXLE	REAR SUSPENSION
FXR 165-350	LWB	16,500	38,000	6UZ1-TCN	257/2,000	1,422/1,400	9-speed manual	Meritor RS-23	Steel Spring
FXD 165-350	LWB	16,500	38,000	6UZ1-TCN	257/2,000	1,422/1,400	9-speed manual	Meritor RS-23	HAS230 Air
	AUTO LWB						6-speed automatic		
	XLWB						9-speed manual		
FXL 240-350	LWB	24,000	38,000	6UZ1-TCN	257/2,000	1,422/1,400	9-speed manual	Meritor RS-23	HAS461 Air
FXZ 240-350	MWB	24,000	45,000	6UZ1-TCN	257/2,000	1,422/1,400	10-speed manual	Meritor MT-14X	Isuzu 6-Rod
	PTO MWB						10-speed manual		
	AUTO MWB						6-speed automatic		
	LWB						9-speed manual		
	AUTO LWB						6-speed automatic		
FXY 240-350	MWB	24,000	45,000	6UZ1-TCN	257/2,000	1,422/1,400	10-speed manual	Meritor MT-14X	HAS461 Air
	AUTO MWB						6-speed automatic		
	LWB						9-speed manual		
	AUTO LWB						6-speed automatic		
GXD 165-350	Prime Mover	16,500	38,000	6UZ1-TCN	257/2,000	1,422/1,400	9-speed manual	Meritor RS-23	HAS230 Air
	Auto Prime Mover						6-speed automatic		

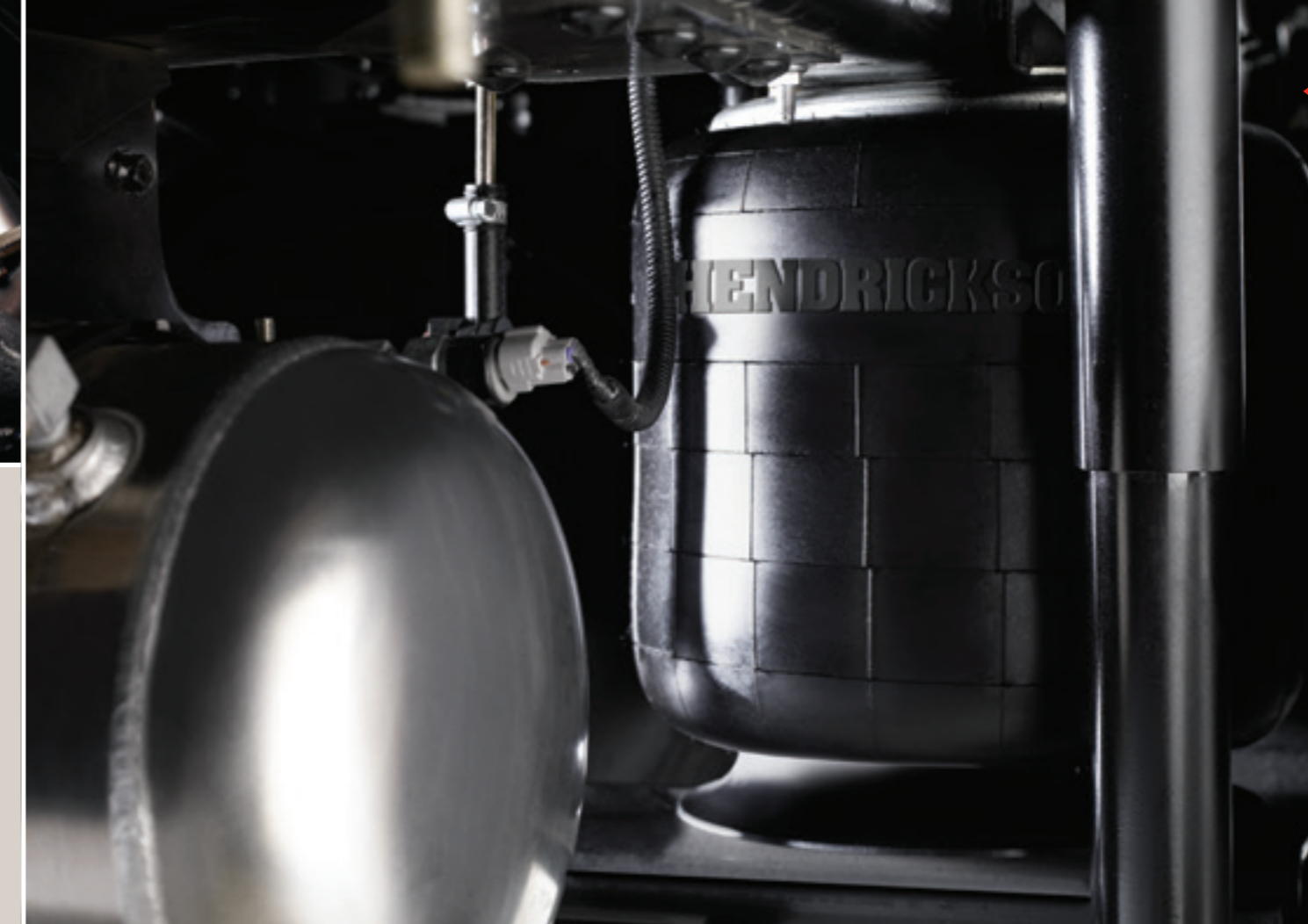
WARRANTIES[†]

MODEL	VEHICLE	ENGINE	CABIN PERFORATION CORROSION	EXTENDED CARE WARRANTY*
All FX models	3 years or 250,000 kilometres or 4,000 hours		3 years unlimited kilometres	5 years or 400,000 kilometres or 6,000 hours

[†]From delivery. *Extended Care Warranty available at extra cost. Conditions apply. Note: The above chart is a brief representation of the chassis specifications within the Isuzu FX Series model range. For a detailed understanding of the model and specification variants, please refer to the applicable Isuzu model Specification Sheet. Subject to the conditions outlined in the IAL New Vehicle Warranty, the FX Series models carry a standard factory warranty as above. Extended Care Warranty may be purchased to cover the owner against the failure of original components, but may exclude some components and expendable items such as oil, filters etc. Isuzu Roadside Assistance is valid for three years from the date of new vehicle purchases. Our goods and services come with guarantees that cannot be excluded under the Australian Consumer Law. For major failures with the service, you are entitled to cancel your service contract with us; and to a refund for the unused portion, or to compensation for its reduced value. You are also entitled to choose a refund or replacement for major failures with goods. If a failure with the goods or a service does not amount to a major failure, you are entitled to have the failure rectified in a reasonable time. If this is not done you are entitled to a refund for the goods and to cancel the contract for the service and obtain a refund of any unused portion. You are also entitled to be compensated for any other reasonably foreseeable loss or damage from a failure in the goods or service. For more details visit the Isuzu website which explains Isuzu Warranties in more detail, or alternatively contact your local dealer. All warranties commence from date of delivery.

SUSPENDED ON AIR.

Most FX models come with Hendrickson airbag rear suspension, a premium proven component from North America. It has a capacity of 10,400kg for 4x2, 20,865kg for 6x2 and 6x4, and helps provide a stable ride for both load and driver.



THE MERITS OF THE WORLD'S BEST AXLE.

Meritor front and rear axles are fitted to all FX models. Yet another world-best component favoured by Isuzu. They offer high capacity and driver-controlled cross locks, so you should never get stuck (except maybe in traffic).



GREATER LOADS IN GREATER SAFETY.

The FX's front axle legal limit has been increased to 6.5 tonne. Our sturdy cabs meet the stringent ECE-R29 standards with built-in FUPS or Front Under-run Protection System. All of which means you can comfortably (and legally) carry much more, but with greater safety all round. We even share big loads.

Isuzu Care.

Reliability means so much more than just a mechanically reliable truck. Isuzu Care is the most comprehensive customer care truck programme ever seen in Australia, offering a suite of innovative support services and a level of customer care that's setting new industry standards. Wherever you are, Care's as close as a Freecall to 1800 035 640.



ISUZU ROADSIDE ASSIST.

Isuzu Assist is a 3-year, 24-hour roadside assistance program that comes at no extra cost with all new Isuzu Trucks. And while our trucks are renowned for their reliability, even if you run out of fuel, lose your keys, get a flat tyre (or battery), Isuzu Assist will be there to sort it out. Just Freecall 1800 947 898.



MAKE STRESS FREE SERVICING A PRIORITY.

There is nothing more crucial than maintaining a healthy fleet, so we've created a 'stress free' service in Isuzu Priority*. Knowing that the lifeblood of your business is under control, and in the best hands, provides true peace of mind and allows you to spend more time doing what you do best – building and growing your business.

*At additional cost.

ISUZU PRIORITY SERVICE AGREEMENTS

ISIS.

Isuzu Sales Information System (ISIS for short) is a software program the dealer will use to help you select the right truck and body for your application. Once it's been programmed with your information, ISIS simulates how the truck will perform in terms of its weight distribution, available power and other performance characteristics. So with ISIS, you're sure to find your perfect match.



ISUZU EXTENDED CARE.

Isuzu Extended Care* provides a two-year extension to Isuzu's three-year factory warranty. As well as the five-year factory warranty, you'll also receive five years of Isuzu's Customer Care programme and Isuzu Assist. Available when you buy your truck, it's the ultimate peace-of-mind.

*At additional cost



ISUZU TRUCK INSURANCE.

By joining forces with Australia's leading truck insurance specialist, NTI, Isuzu can now offer you access to a broad range of insurance products designed specifically for the transport industry, including Commercial Motor Policy, Public & Products Liability Policy, Marine Cargo Policy to cover the freight liability and carriers' cargo insurance, and Business Interruption Policy.

